



Sliding Barn Door Hardware Instructions

DRILL THE TRACK

- Are the holes pre-drilled? If not, you need to make sure to locate the door studs and drill through the track. With a 3/8" drill bit, drill into the track at the marked locations. End holes pre-drilled from factory.
- With the holes drilled, hold the track up at the determined height, and place the 1 5/8" spacer & fender washer between the track and the wall. A lag bolt will then enter the track, go through the spacer & washer, and enter into the wall. Note: it may be helpful to leave some slack in tightening until all bolts are into the wall. Once all are loosely hung, you may go back and tighten them all the way. The spacers keep the track of the wall at an even length.
- Making sure the track is level is extremely important.

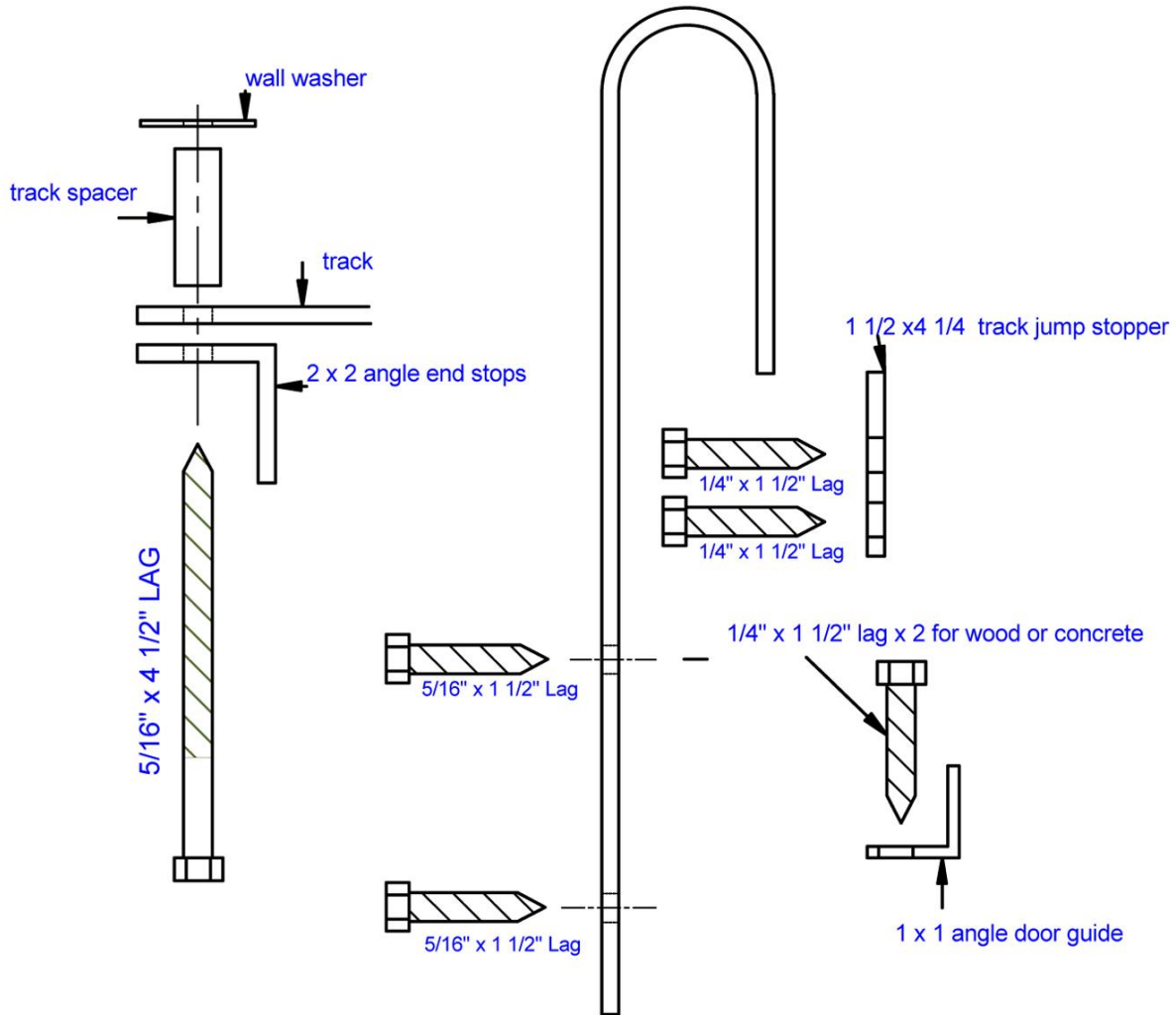
TRACK STOPS

- The stops are to be placed on each ends of the track, attached using same hardware as in the other holes. However, they can be placed anywhere along the track if you are trying to stop the door at a different location than the tracks end.
- Included in your hardware set are 4 1/2" lag bolts, use those to attach the stop to the track.

INSERTING DOOR HANGERS

- The standard set of hardware works with doors of 1 1/4"-2 1/4" thickness.
- Stand the door up under the track to find the best location for the straps. Mark off where the holes in the straps will go.
- Drill into but not through the door at the markings, a 1/4" pilot bit works well.
- Attach the straps before placing the hardware on the rail. Once the straps are securely tightened you are ready to place the hardware on the rail.





plastic floor anchor for concrete x 2 (not shown)

you must drill your track per your conditions to hit studs or a header
 mount jump stop 1/4" below bottom of track on side of door

